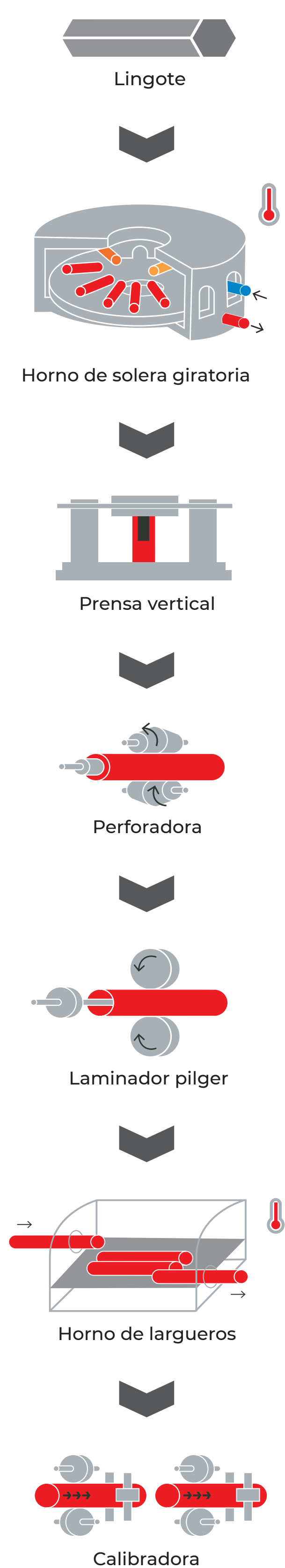


ACERÍA

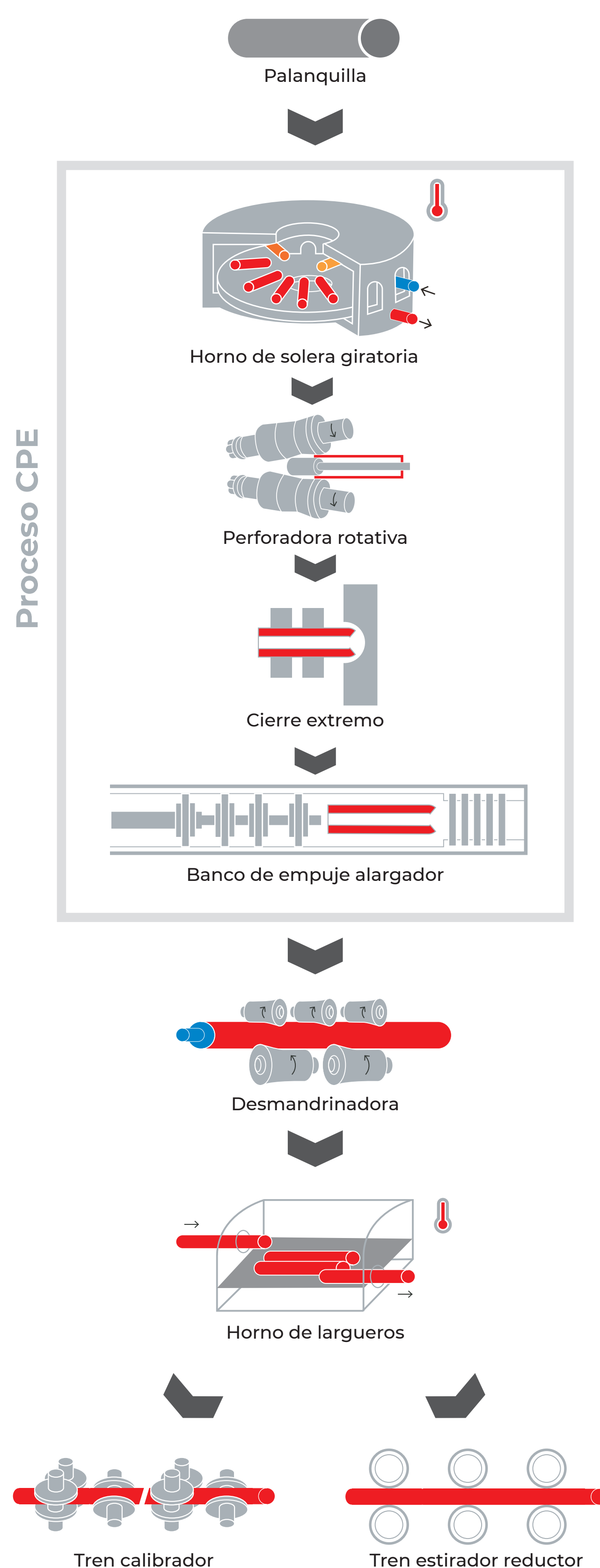


28' PRODUCCIÓN DE TUBOS EN ACERO INOXIDABLE, ALEADOS Y AL CARBONO 1/4'

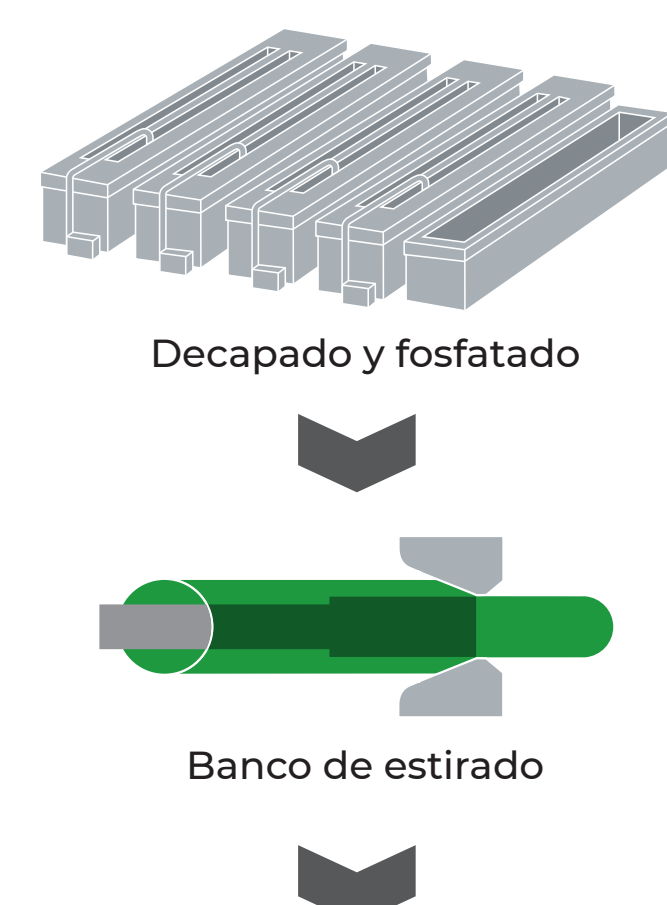
PILGER



LAMINADO CALIENTE



LAMINADO EN FRÍO

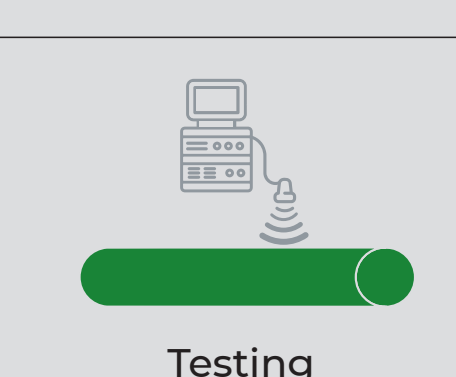


PREPARACIÓN FINAL

Acabados



Ensayos (END) Inspección



Preparación y Transporte

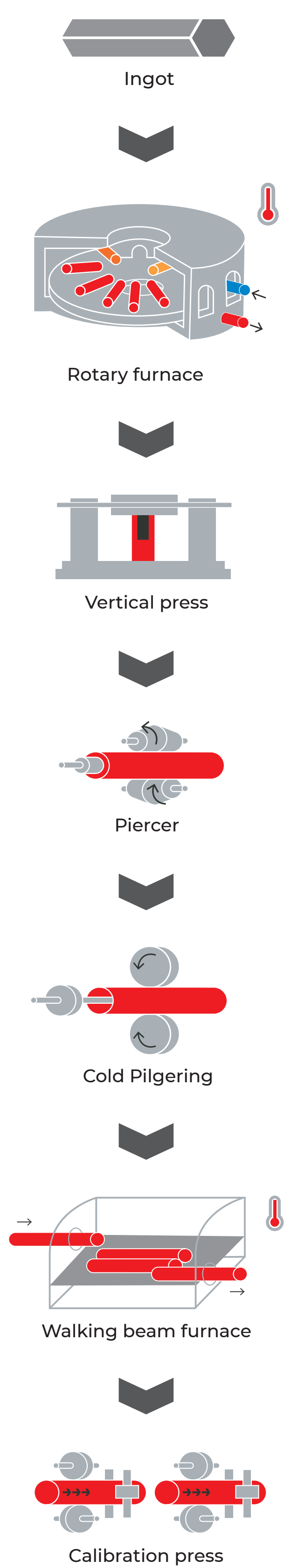


STEEL MILL

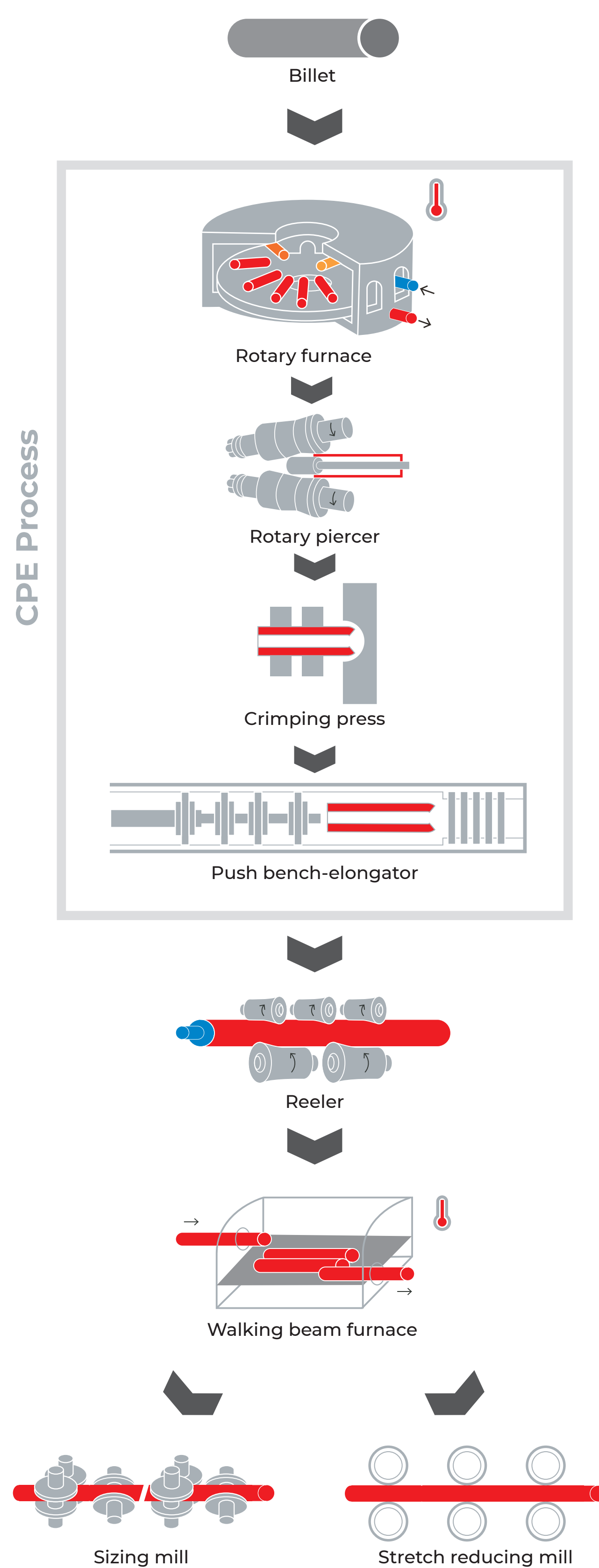


28' STAINLESS STEEL, HIGH-ALLOY AND CARBON STEEL TUBE PRODUCTION 1/4'

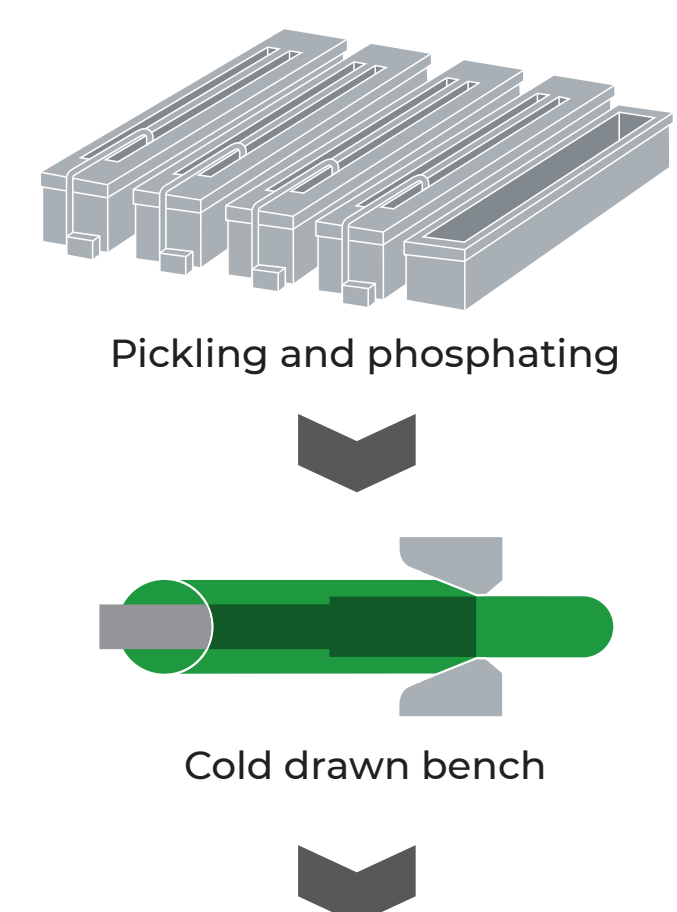
PILGER



HOT ROLLING



COLD ROLLING



FINISHING LINE

